

*It's easy to get in touch...*



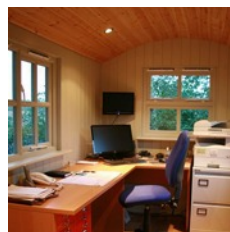
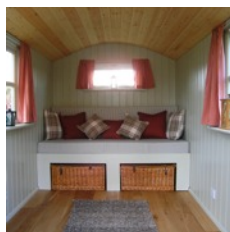
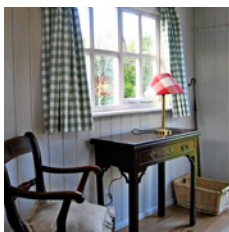
Suffolk Shepherd's Huts Ltd  
Brook Farm  
Cookley  
Suffolk IP19 0LN



info@suffolkshepherdhuts.co.uk  
01986 785112 / 07824 333004  
www.suffolkshepherdhuts.co.uk

We respond to all enquiries as quickly as we can and are happy to answer any questions you may have about our products or the way that we can tailor our shepherd's huts to your personal requirements.

*Our Shepherd's Huts in use...*



How ever you choose to use your Suffolk Shepherd's Hut we will love coming up with expert ideas on how it can be customised to fit the bill perfectly every time.

*The velvet night cupped the  
moon with soft black hands*

*And the yellow glow made the  
sharp frost glint in icy bands,  
across the hills.*

*Cut with cold he checked his  
sheep, white patches in the  
inky night*

*Then turned to crunch across  
crisp grass towards a beacon  
light, his shepherd's hut,*

*Hot stove spiralling smoke  
against the chill, sweet  
sanctuary from the weather's ills.*  
Harris Renrut, 1905

*Our Customers...*

"With a recent addition to the family, I knew my office was going to have to move. The hut has become a brilliant office and I now appreciate "going out" to work."  
D Garner, Norfolk.

"Way beyond our expectations. I am so pleased with my hut and I can't leave it alone. Since we have had it, I have spent more time in it than in the house!"  
S Turner, Suffolk.

"I love it! Bill and I are both delighted with the hut. It has produced a lot of "Oh Wow" comments from people."  
H Grant, Norfolk.



Visit Suffolk Shepherd's Huts on Facebook

© Suffolk Shepherds Huts Ltd MMXV



# Suffolk Shepherd's Huts

*www.suffolkshepherdhuts.co.uk*



*for work, rest or play*

## Beautiful Handcrafted Shepherd's Huts

A shepherd's hut conjures up a glorious Victorian picture of cosy shelter from a harsh British winter. The saviour of many a shepherd tending to his lambing flock. Our new shepherd's huts are founded on this tradition but with modern comforts carefully woven in so as not to detract from the hut's rural grace and simple beauty.

We strike a perfect balance with subtle skill to bring you an exquisite, wood-clad, hand-painted hut with electricity, insulation and carefully fitted double-glazed windows and door.



*Painted Shiplap Door to middle*



*Painted Shiplap Door to end*



*Painted Shiplap Door to end*



*Painted Shiplap Veranda to end*



*Eco Hut Door to end*

## High Quality Materials and Finish

We take great pride in the quality of finish for every Suffolk Shepherd's Hut and offer enormous flexibility on design and colour.

All huts are generally made to order but we do occasionally have huts available for immediate purchase.

No planning permission required.



Suffolk Shepherd's Huts are an instant extra room that can be taken with you if you move.

Uses include: office / spare bedroom / light industry studio / writers retreat / summer house / bird watching hut / bed & breakfast facility / etc.

The quality of finish by Suffolk Shepherd's Huts is unsurpassed by rivals at a highly competitive price.



*Eco Hut with painted Veranda*

## Key Features of a Standard Hut



- 12 ft x 6ft 4" internal dimensions with painted steel chassis, removable tow bar and turning front axle
- Hardwood stable style door and frame to end with one double-glazed pane
- Two double-glazed, painted softwood windows (one 1200x900 with 8 panes - cottage style; one 900x450 - top hinged/ 1-pane)
- Removable, stained softwood stairs
- Exterior walls - painted shiplap or kiln dried Siberian feather-edged larch
- Tongue and groove ceiling - teak oiled
- Tongue and groove interior walls - painted
- Engineered oak floor
- Insulated floor, walls and roof
- Treated 4x2" timber frame
- Galvanised corrugated tin roof
- Painted woodwork is 2x knot treated, 2x primer / undercoated, 2x top coat using premier quality paint



*Farrow & Ball Colour Selector*

"It's had loads of compliments, so expect a deluge of orders from round here." A Golding, Bedford.

## Extras & Upgrades

- Add an extra window or forged window furniture
- Upgrade to hardwood windows
- 4-paned or 9-paned hardwood doors available
- Need more room? Huts can be extended upto 16ft long and 7ft4in wide.
- The 2'6" veranda extension is a very popular addition
- Oak stairs upgrade (treated with OSMO UV clear protection)
- Painted ceiling to match interior walls
- Supercoat painted roof to match exterior or colour of choice
- Fully certified electrical pack (2x double sockets / 4x downlighters / 16A consumer unit / caravan hook-up point)
- Super warm insulation upgrade (recommended for office or regular winter use)
- Slide-out 4ft sofa-bed (includes covered mattresses & 2x wicker baskets under)
- Stockton-3 multi fuel stove
- Fold down table - ½ round, painted MDF or rectangular, block oak
- Shelving / blinds



*Stockton-3 Multi Fuel Stove*



*Roof Colours*